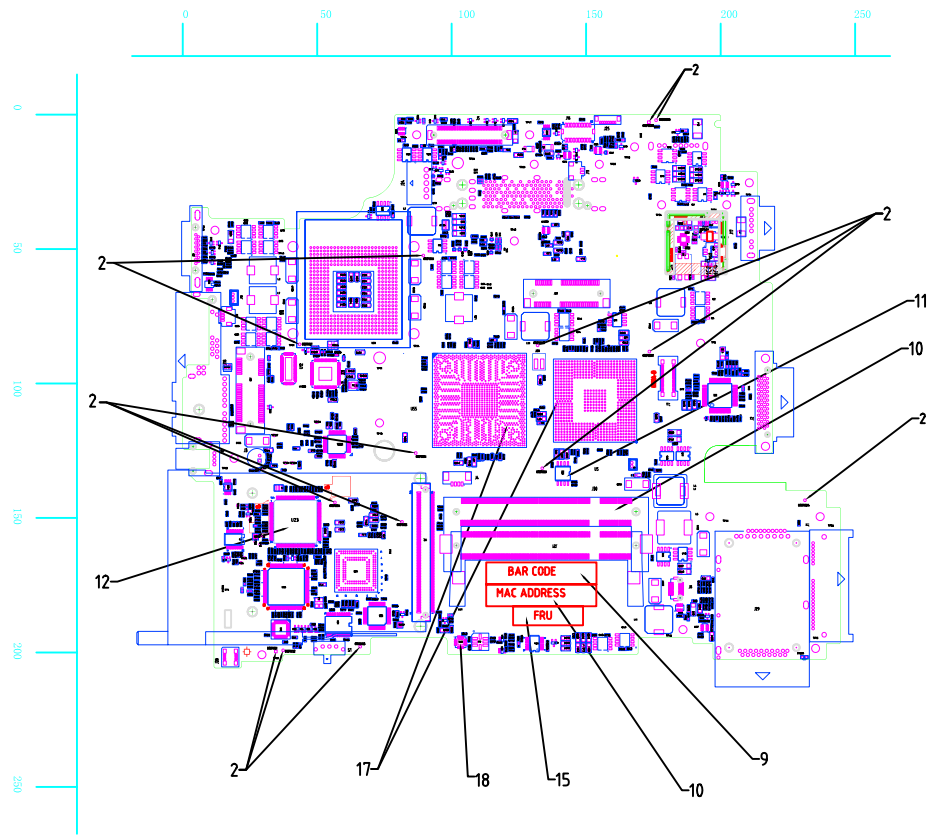


	1	2	3	4	5	6	7	8	9	10					
A				REL FOR ASM	QTY	TECHNICAL APPROVAL			SYM	DATE	EC NO.	SYM	DATE	EC NO.	PART NO.
						ELECTRICAL									P/N 42W7487
						MATERIAL									
														DEVELOPMENT NO.	Q/M

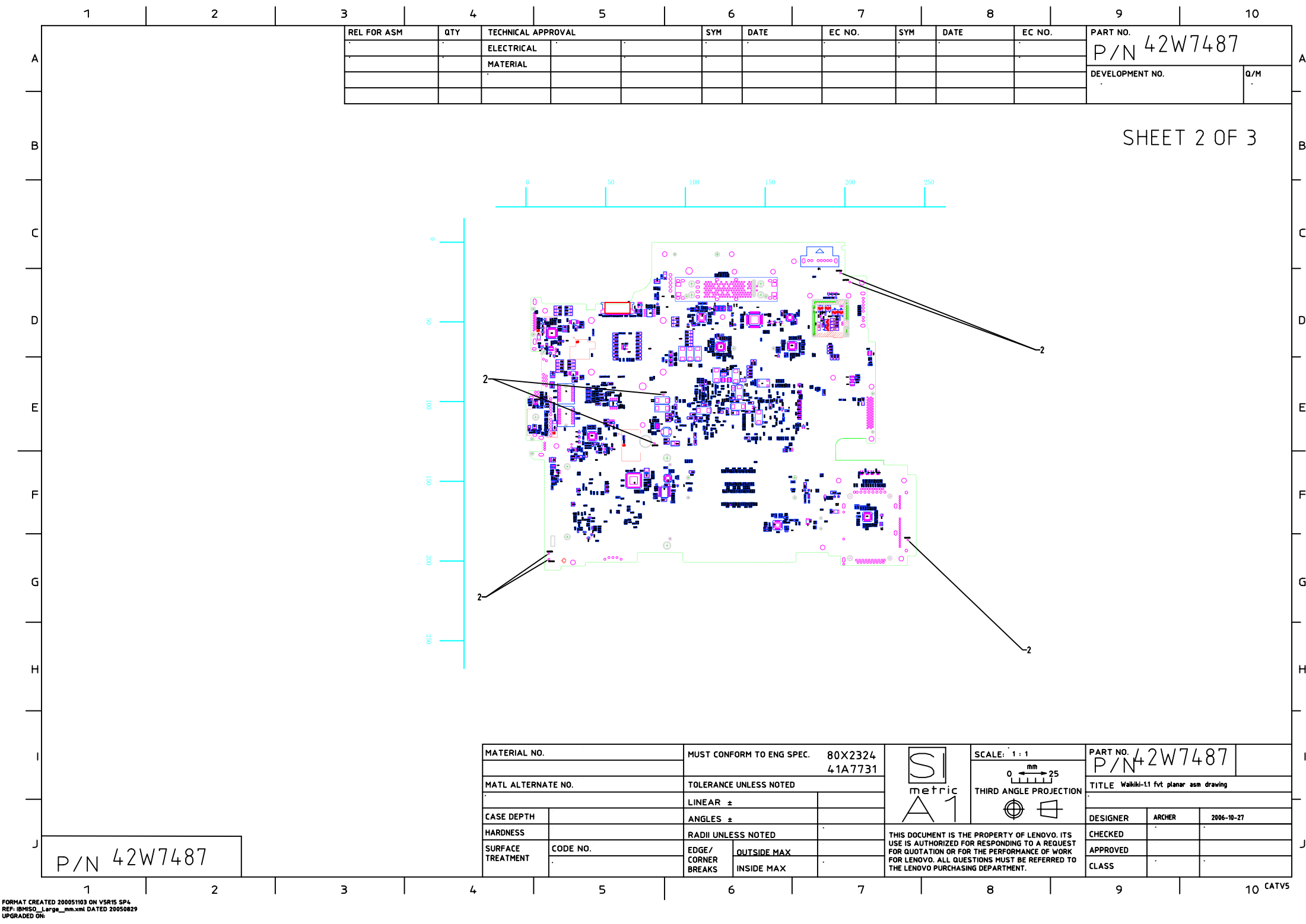
SHEET 1 OF 3



MATERIAL NO.		MUST CONFORM TO ENG SPEC.		80X2324 41A7731		<div><div>S</div><div>metric</div><div>A1</div></div>	<div>SCALE: 1 : 1</div> <div><div>0</div><div>mm</div><div>25</div></div> <div>THIRD ANGLE PROJECTION</div>	PART NO. P/N42W7487							
MATL ALTERNATE NO.		TOLERANCE UNLESS NOTED						TITLE Walkiki-11 fvt planar asm drawing							
CASE DEPTH		LINEAR ±													
HARDNESS		ANGLES ±													
		RADIO UNLESS NOTED				THIS DOCUMENT IS THE PROPERTY OF LENOVO. ITS USE IS AUTHORIZED FOR RESPONDING TO A REQUEST FOR QUOTATION OR FOR THE PERFORMANCE OF WORK FOR LENOVO. ALL QUESTIONS MUST BE REFERRED TO THE LENOVO PURCHASING DEPARTMENT.									
SURFACE TREATMENT		CODE NO.		EDGE/ CORNER BREAKS								OUTSIDE MAX			
												INSIDE MAX			

P/N 42W7487

ADDED P/N



1	2	3	4	5	6	7	8	9	10																																																																																				
REL FOR ASM			QTY	TECHNICAL APPROVAL		SYM	DATE	EC NO.	SYM	DATE	EC NO.	PART NO.																																																																																	
				ELECTRICAL								P/N42W7487																																																																																	
				MATERIAL								DEVELOPMENT NO.																																																																																	
												Q/M																																																																																	
												SHEET 3 OF 3																																																																																	
<p>NOTES:</p> <p>1, RAW CARD P/N IS 42W7486</p> <p>2, ASSEMBLY FIDUCIAL POINT</p> <p>TOP:</p> <table><tr><td>(1364. 00, -143. 00)</td><td>(568. 00, -317. 00)</td></tr><tr><td>(1470. 00, -161. 00)</td><td>(570. 00, -172. 00)</td></tr><tr><td>(2598. 40, -214. 40)</td><td>(3176. 80, -3033. 70)</td></tr><tr><td>(2228. 20, -2325. 60)</td><td>(3395. 40, -4235. 70)</td></tr><tr><td>(3209. 70, -2042. 30)</td><td>(7763. 00, -7247. 00)</td></tr><tr><td>(3410. 80, -3049. 80)</td><td>(7993. 00, -7020. 00)</td></tr><tr><td>(1711. 00, -4639. 90)</td><td>(9423. 00, -650. 00)</td></tr><tr><td>(3521. 70, -5940. 80)</td><td></td></tr><tr><td>(5262. 80, -2826. 70)</td><td></td></tr><tr><td>(5196. 50, -4626. 40)</td><td></td></tr><tr><td>(6831. 50, -4535. 10)</td><td></td></tr><tr><td>(6824. 00, -7893. 00)</td><td></td></tr><tr><td>(6929. 00, -7923. 00)</td><td></td></tr><tr><td>(9108. 00, -2359. 00)</td><td></td></tr></table> <p>BOT:</p>												(1364. 00, -143. 00)	(568. 00, -317. 00)	(1470. 00, -161. 00)	(570. 00, -172. 00)	(2598. 40, -214. 40)	(3176. 80, -3033. 70)	(2228. 20, -2325. 60)	(3395. 40, -4235. 70)	(3209. 70, -2042. 30)	(7763. 00, -7247. 00)	(3410. 80, -3049. 80)	(7993. 00, -7020. 00)	(1711. 00, -4639. 90)	(9423. 00, -650. 00)	(3521. 70, -5940. 80)		(5262. 80, -2826. 70)		(5196. 50, -4626. 40)		(6831. 50, -4535. 10)		(6824. 00, -7893. 00)		(6929. 00, -7923. 00)		(9108. 00, -2359. 00)		<p>10, PRINT 3 MAC LABELS BY USING CODE 39 AND APPLY 1 LABEL TO INDICATED AREA.</p> <p>ALSO ATTACH OTHER 2 LABELS ON J21 WITH ADHESIVE TAPE</p> <p>MAC ADDRESS : XX XX XX XX XX XX (ASSIGNED BY RAREIGH GCM)</p> <p>11, U49 (BLANK FLASH ROM) SHOULD BE PROGRAMMED.(REFER TO EC NOTICE)</p> <p>12, U23 (BLANK HB) SHOULD BE PROGRAMMED (REFER TO EC NOTICE)</p> <p>13, COUNTRY OF ORIGIN MARKING SHOULD BE APPLIED IN THE BARCODE LABEL OR WITH OTHER WAY.</p> <p>COUNTRY OF ORIGIN : ASSEMBLY MADE IN XXXXX</p> <p>(WHERE XXXXX IS A FULL NAME OF THE ASSEMBLY COUNTRY)</p> <p>14, PART SELECTION RULE.</p> <p>GENERAL INFORMATION.</p> <p>ON ONE LINE BOM ITEM WITH MULTIPLE USAGE QUANTITY.</p> <p>ECAT SHOULD HAVE SAME SUPPLIER COMPONENTS ON ONE PLANAR.</p> <p>15, APPLY FRU LABEL TO THE INDICATED AREA. LABEL FORM IS AS FOLLOWS.</p> <p>FRU LABEL CONTENTS.</p> <p>(1) LF CARD ASM</p> <div><p>PLANAR FRU PN: XXXXXXXX iiiiiiiiii</p><p>Ⓟ ⓔ1 xxx</p></div> <p>xxx : PLANAR FRU P/N</p> <p>iii : BAR CODE FOR PLANAR FRU P/N</p> <p>xxx : POSSIBLE MFG SITE</p> <p>NOTE : FRU PN WILL BE DEFINED BY BOX/PE EC.</p> <p>LF FRU LABEL SHOULD HAVE "NOT Pb AND e1 MARK"</p> <p>16, FOLLOW VISUAL INSPECTION CRITERIA FOR MOBILE PLANAR</p> <p>17, APPLY GLUE TO U5 AND U55 BY INSTRUCTION</p> <p>18, DO NOT APPLY SOLDER PASTE TO THERMAL PAD OF U65 (ADXL322/LIS244AL)</p> <p>19, FOLLOWING PARTS SHOULD BE ASSEMBLED.</p> <p>INSULATION_ (SEE ANOTHER DOCUMENT)</p>																																																					
(1364. 00, -143. 00)	(568. 00, -317. 00)																																																																																												
(1470. 00, -161. 00)	(570. 00, -172. 00)																																																																																												
(2598. 40, -214. 40)	(3176. 80, -3033. 70)																																																																																												
(2228. 20, -2325. 60)	(3395. 40, -4235. 70)																																																																																												
(3209. 70, -2042. 30)	(7763. 00, -7247. 00)																																																																																												
(3410. 80, -3049. 80)	(7993. 00, -7020. 00)																																																																																												
(1711. 00, -4639. 90)	(9423. 00, -650. 00)																																																																																												
(3521. 70, -5940. 80)																																																																																													
(5262. 80, -2826. 70)																																																																																													
(5196. 50, -4626. 40)																																																																																													
(6831. 50, -4535. 10)																																																																																													
(6824. 00, -7893. 00)																																																																																													
(6929. 00, -7923. 00)																																																																																													
(9108. 00, -2359. 00)																																																																																													
<p>3, UL FLAMMABILITY OF THIS RAW CARD MUST BE MORE THAN 94V-1</p> <p>4, SCALE IS INDICATED.</p> <p>5, WARNING:</p> <p>PROPER ESD PROCEDURES AND PROTECTION MUST BE IN PLACE WHEREVER CARDS ARE HANDLED</p> <p>ELECTROSTATIC DISCHARGES MAY DESTROY MODULES.</p> <p>6, WARNING:</p> <p>THE MANUFACTURING PROCESS OF THIS PRINTED CIRCUIT CARD MAY REQUIRE SPECIAL SAFETY AND/OR HEALTH PRECAUTIONS.</p> <p>7, CONNECTORS SHOULD BE SOLDERED FLUSH WITHIN 0.3mm MAX ON THE SURFACE OF THE CARD.</p> <p>8, GROUND PADS SHOULD HAVE NO SOLDER.</p> <p>IN CASE OF SOLDER FROM VIAS WITH OPPOSITE SIDE SOLDERED.AND/OR SOLDER ACCIDENTALLY ADHERED. SUCH SOLDER THICKNESS MUST NOT EXCEED 0.05mm.</p> <p>9, APPLY BARCODE LABEL TO THE INDICATED AREA.</p> <p>THE BARCODE HEADER:XXXXX (ASSIGNED BY RALEIGH GCM)</p> <p>NOTE : IDENTIFICATION OF FRU P/N IS NOT REQUIRED AT THIS PLANAR LEVEL.</p>												<p>10, PRINT 3 MAC LABELS BY USING CODE 39 AND APPLY 1 LABEL TO INDICATED AREA.</p> <p>ALSO ATTACH OTHER 2 LABELS ON J21 WITH ADHESIVE TAPE</p> <p>MAC ADDRESS : XX XX XX XX XX XX (ASSIGNED BY RAREIGH GCM)</p> <p>11, U49 (BLANK FLASH ROM) SHOULD BE PROGRAMMED.(REFER TO EC NOTICE)</p> <p>12, U23 (BLANK HB) SHOULD BE PROGRAMMED (REFER TO EC NOTICE)</p> <p>13, COUNTRY OF ORIGIN MARKING SHOULD BE APPLIED IN THE BARCODE LABEL OR WITH OTHER WAY.</p> <p>COUNTRY OF ORIGIN : ASSEMBLY MADE IN XXXXX</p> <p>(WHERE XXXXX IS A FULL NAME OF THE ASSEMBLY COUNTRY)</p> <p>14, PART SELECTION RULE.</p> <p>GENERAL INFORMATION.</p> <p>ON ONE LINE BOM ITEM WITH MULTIPLE USAGE QUANTITY.</p> <p>ECAT SHOULD HAVE SAME SUPPLIER COMPONENTS ON ONE PLANAR.</p> <p>15, APPLY FRU LABEL TO THE INDICATED AREA. LABEL FORM IS AS FOLLOWS.</p> <p>FRU LABEL CONTENTS.</p> <p>(1) LF CARD ASM</p> <div><p>PLANAR FRU PN: XXXXXXXX iiiiiiiiii</p><p>Ⓟ ⓔ1 xxx</p></div> <p>xxx : PLANAR FRU P/N</p> <p>iii : BAR CODE FOR PLANAR FRU P/N</p> <p>xxx : POSSIBLE MFG SITE</p> <p>NOTE : FRU PN WILL BE DEFINED BY BOX/PE EC.</p> <p>LF FRU LABEL SHOULD HAVE "NOT Pb AND e1 MARK"</p> <p>16, FOLLOW VISUAL INSPECTION CRITERIA FOR MOBILE PLANAR</p> <p>17, APPLY GLUE TO U5 AND U55 BY INSTRUCTION</p> <p>18, DO NOT APPLY SOLDER PASTE TO THERMAL PAD OF U65 (ADXL322/LIS244AL)</p> <p>19, FOLLOWING PARTS SHOULD BE ASSEMBLED.</p> <p>INSULATION_ (SEE ANOTHER DOCUMENT)</p>																																																																																	
<p>P/N 42W7487</p>												<table><tr><td colspan="2">MATERIAL NO.</td><td colspan="2">MUST CONFORM TO ENG SPEC.</td><td colspan="2">80X2324</td><td colspan="2">SCALE: 1:1</td><td colspan="2">PART NO.</td></tr><tr><td colspan="2"></td><td colspan="2"></td><td colspan="2">41A7731</td><td colspan="2"></td><td colspan="2">P/N42W7487</td></tr><tr><td colspan="2">MATL ALTERNATE NO.</td><td colspan="2">TOLERANCE UNLESS NOTED</td><td colspan="2"></td><td colspan="2">THIRD ANGLE PROJECTION</td><td colspan="2">TITLE Walkiki-11 fvt planar asm drawing</td></tr><tr><td colspan="2"></td><td colspan="2">LINEAR ±</td><td colspan="2"></td><td colspan="2">0 25 mm</td><td colspan="2"></td></tr><tr><td colspan="2">CASE DEPTH</td><td colspan="2">ANGLES ±</td><td colspan="2"></td><td colspan="2">THIRD ANGLE PROJECTION</td><td colspan="2"></td></tr><tr><td colspan="2">HARDNESS</td><td colspan="2">RADI UNLESS NOTED</td><td colspan="2"></td><td colspan="2">THIRD ANGLE PROJECTION</td><td colspan="2"></td></tr><tr><td colspan="2">SURFACE TREATMENT</td><td colspan="2">CODE NO.</td><td colspan="2">EDGE/ CORNER BREAKS</td><td colspan="2">OUTSIDE MAX</td><td colspan="2">INSIDE MAX</td></tr><tr><td colspan="2"></td><td colspan="2"></td><td colspan="2"></td><td colspan="2"></td><td colspan="2"></td></tr></table>		MATERIAL NO.		MUST CONFORM TO ENG SPEC.		80X2324		SCALE: 1:1		PART NO.						41A7731				P/N42W7487		MATL ALTERNATE NO.		TOLERANCE UNLESS NOTED				THIRD ANGLE PROJECTION		TITLE Walkiki-11 fvt planar asm drawing				LINEAR ±				0 25 mm				CASE DEPTH		ANGLES ±				THIRD ANGLE PROJECTION				HARDNESS		RADI UNLESS NOTED				THIRD ANGLE PROJECTION				SURFACE TREATMENT		CODE NO.		EDGE/ CORNER BREAKS		OUTSIDE MAX		INSIDE MAX											
MATERIAL NO.		MUST CONFORM TO ENG SPEC.		80X2324		SCALE: 1:1		PART NO.																																																																																					
				41A7731				P/N42W7487																																																																																					
MATL ALTERNATE NO.		TOLERANCE UNLESS NOTED				THIRD ANGLE PROJECTION		TITLE Walkiki-11 fvt planar asm drawing																																																																																					
		LINEAR ±				0 25 mm																																																																																							
CASE DEPTH		ANGLES ±				THIRD ANGLE PROJECTION																																																																																							
HARDNESS		RADI UNLESS NOTED				THIRD ANGLE PROJECTION																																																																																							
SURFACE TREATMENT		CODE NO.		EDGE/ CORNER BREAKS		OUTSIDE MAX		INSIDE MAX																																																																																					
<p>FORMAT CREATED 20051103 ON V5R15 SP4</p> <p>REF: IBMISO_Large_mm.xml DATED 20050829</p> <p>UPGRADED ON:</p>												CATV5																																																																																	